



1 BEDROOM APARTMENT IN ELENITE



Price:	114 999 €	Area, m²:	65 m ²
ID:	3420	Floor:	4
Section:	Sale	Floors:	5
Property type:	Apartment	To sea:	0.01 km
Location:	Bulgaria, Elenite	To airport:	40 km

Features:

- | | | |
|-------------|------------|-----------|
| ✓ Furniture | ✓ Parking | ✓ Pool |
| ✓ Elevator | ✓ Security | ✓ Balcony |

Description:

We offer you a one-bedroom apartment in the Robinson complex, Elenite. The apartment has an area of 65 square meters and is located on the fourth residential floor. It is furnished with everything you need. The living room has a large sofa, a unit with a TV, a dining table with white leather chairs. The kitchen has a three-color combination with a glossy finish, has hotplates, an extractor hood, an oven, a large refrigerator with a freezer compartment and a washing machine. The bedroom has glossy white furniture, a large wardrobe with sliding doors. The bathroom is equipped with a shower cabin, a large cupboard and a mirror. The terrace has rattan furniture and a sea view. It is located on the first line. Maintenance fee 12 euros/sq.m.

The Robinson complex is located in Elenite resort. It is located on the first line to the sea. There is a swimming pool with a children's area, a restaurant, a bar on the beach, parking, lots of green areas, etc. The bay on the beach is incredibly beautiful. The resort is at the foot of Stara Planina and the combination of sea and mountain is unique. The place predisposes to a peaceful and relaxing vacation. It is also suitable for subletting. There is a bus stop for Saint Vlas, Sunny Beach and Nessebar. On the territory of the resort there are shops and everything you need for your vacation.



**PROPERTY
FORMAT**

BULGARIAN PROPERTY FOR SALE

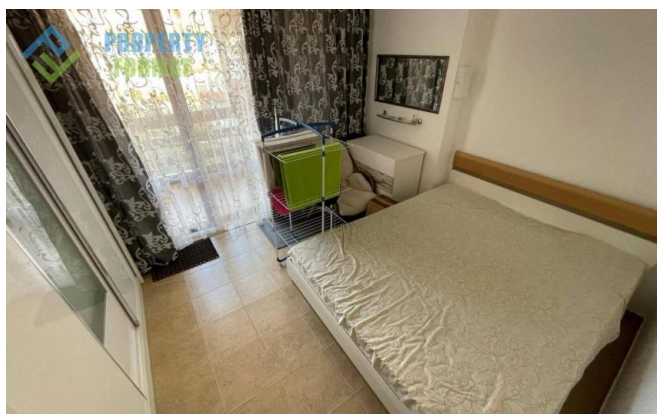
+359 895855050

E-mail: info@propertyformat.com

Skype: [propertyformat](https://www.skype.com/en/contacts/propertyformat)



Images:





**PROPERTY
FORMAT**

BULGARIAN PROPERTY FOR SALE

+359 895855050

E-mail: info@propertyformat.com

Skype: propertyformat

